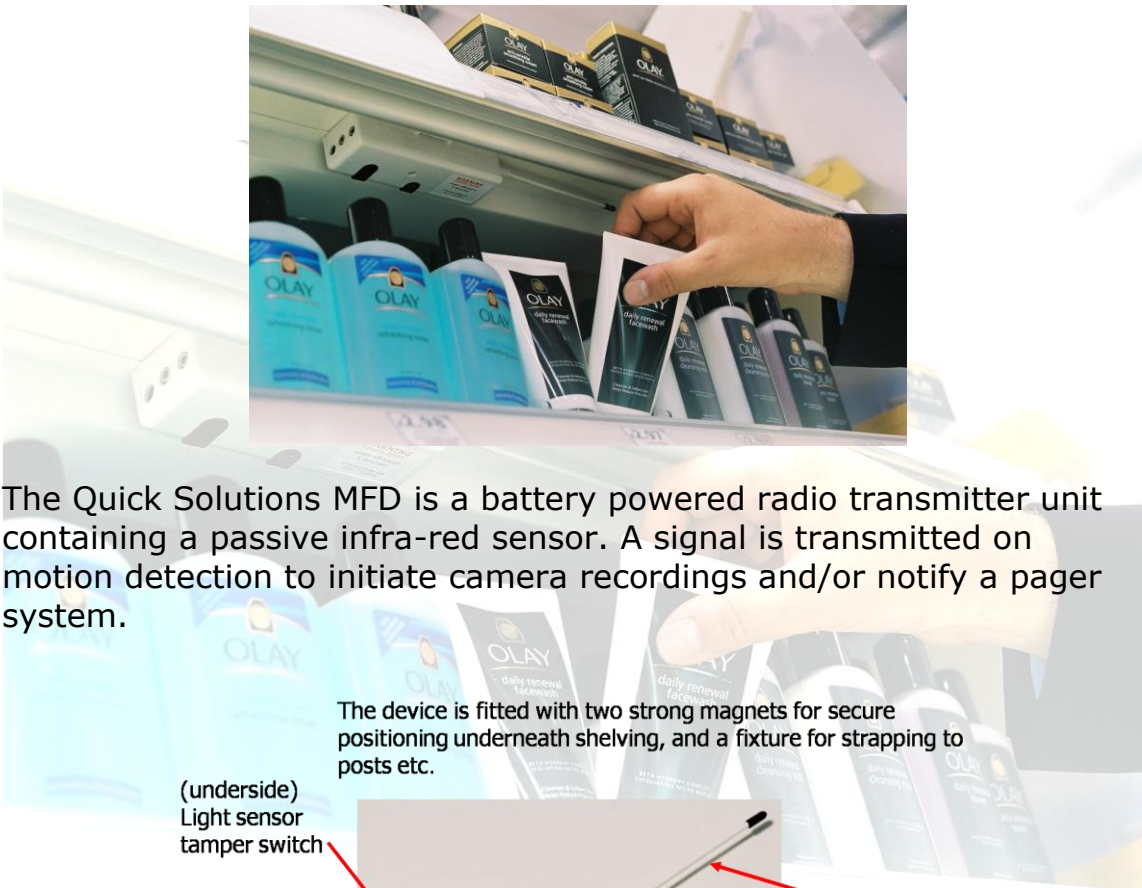


Order online at www.quicksolutions.co.uk or call 0161 776 0888

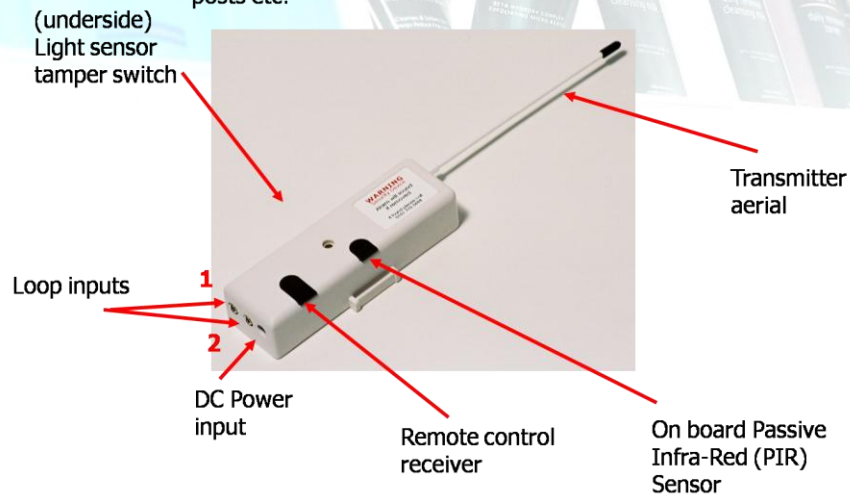


Multi-Function Device Datasheet



The Quick Solutions MFD is a battery powered radio transmitter unit containing a passive infra-red sensor. A signal is transmitted on motion detection to initiate camera recordings and/or notify a pager system.

The device is fitted with two strong magnets for secure positioning underneath shelving, and a fixture for strapping to posts etc.



Order online at www.quicksolutions.co.uk or call 0161 776 0888



The MFD transmits its signal to a ceiling or wall mounted receiver unit (pictured), which in turn communicates with the CCTV system.

The MFD is typically used to detect pick up of a product from a shelf, but has a range of other applications:

Loop inputs



Customer service/panic switch

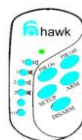


Long range auxiliary PIR

- Product tamper loop
- Door contacts
- Pressure pads

Technical Specifications

- Frequency FM 433MHz
- 3 mW RF power
- 600m signal range
- 7 cell battery
- Light sensitive tamper switch
- Audible alarm deterrent on tamper
- 30-90 day battery life
- Periodic battery status transmission enabling monitoring
- Rechargeable battery
- 2 loop input sockets capable of responding to any circuit with a 3.5mm jack plug
- Remote control handset



- Easy and fast to deploy