

## EPOS Integration with A Quick Solutions DVR

Integrating your EPOS data with a Quick Solutions DVR links transaction activity to CCTV evidence. A powerful loss prevention tool, you can ***quickly identify and eliminate losses in your store.***

- **Compatible with hundreds of the most common EPOS data providers**
- **Easy to install. No interference with IT systems necessary.**
- **View live data overlaid onto camera images.**
- **Search and view footage by transaction, operator ID or item.**
- **View multiple sites at the same time from a remote location.**

Quick Solutions DVRs can receive EPOS data in one of two ways:

1. Data stream from EPOS server
2. Individual serial data streams from till points

Data in larger stores is typically delivered via IP as shown:

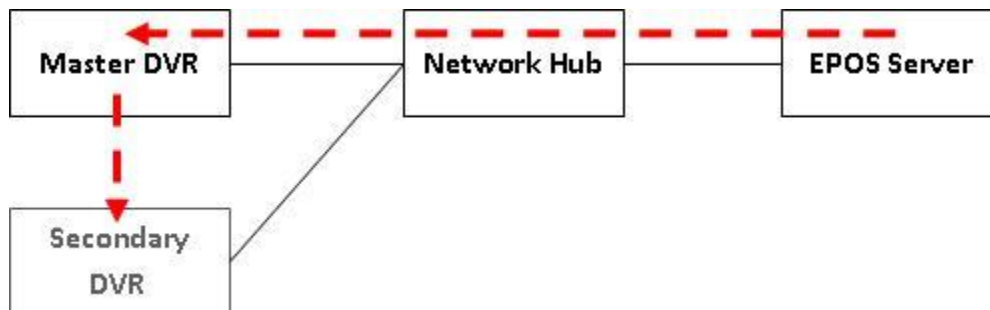


Figure 1. EPOS Integration by IP

All units are connected to a network hub, and one DVR is designated the master. EPOS data is delivered to the Master DVR, separated out by till and distributed appropriately across secondary DVRs where necessary. Data can also be delivered to the Master DVR by serial link to the EPOS controller. Some integration work is required to interpret the data by our experienced in-house software development team.

Data in smaller retail stores can also be delivered via individual serial data streams:

## EPOS Integration with a QS DVR

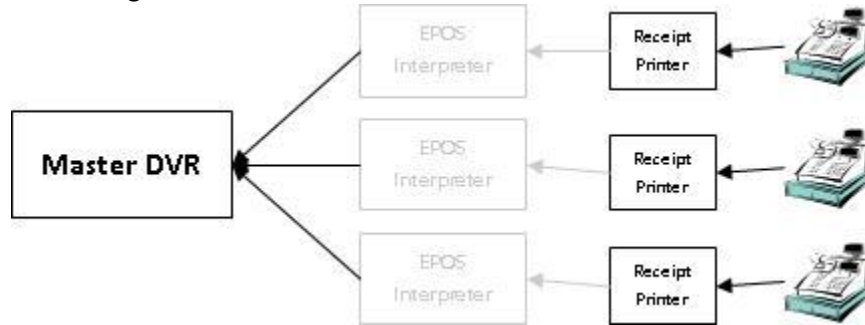
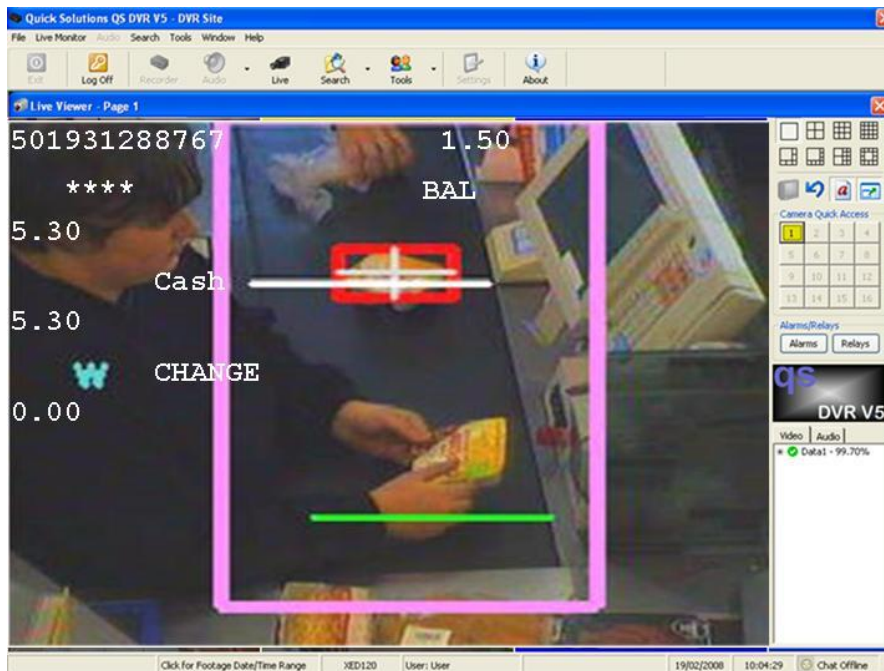


Figure 2. EPOS integration by Serial link

Data is taken from receipt printers and **does not affect a store's IT system**. The DVR can directly integrate with over 60 EPOS providers.<sup>1</sup> For unsupported providers a third party interpreter unit is installed at the till point to convert data into a format the DVR can understand.<sup>2</sup> Providing the data is of a format supported either by the DVR or the interpreter, no integration work is required.

## Live EPOS Handling

EPOS data can be assigned to a camera and overlaid onto live images:

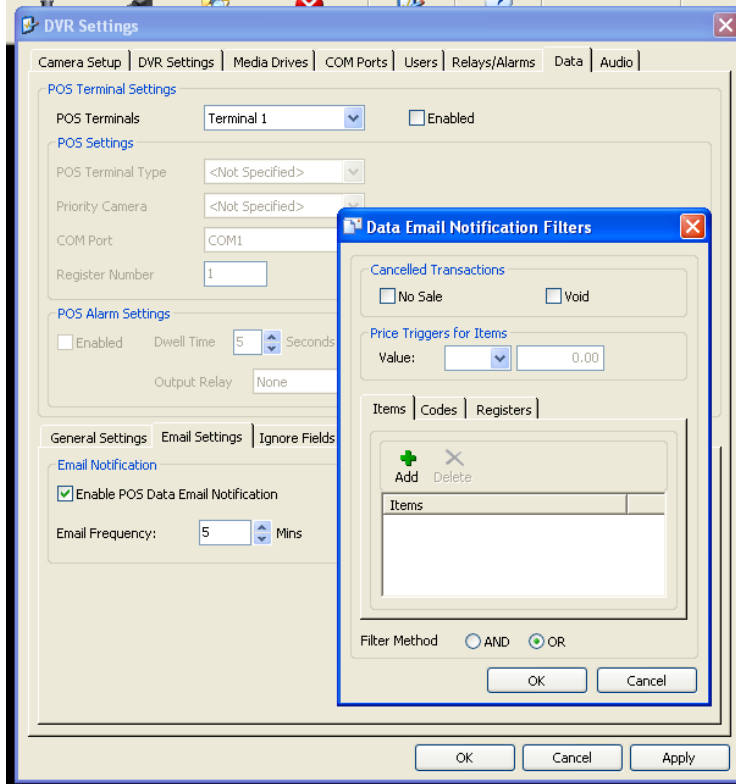


EPOS event triggers also enable you to email notifications of no sales, voids and other suspicious activity to a networked location:

<sup>1</sup> See appendix for a current list of supported EPOS providers

<sup>2</sup> The EPOS interpreter is provided by SIDG Ltd and provides support for over 180 EPOS systems. For more information visit [www.sidg.co.uk](http://www.sidg.co.uk).

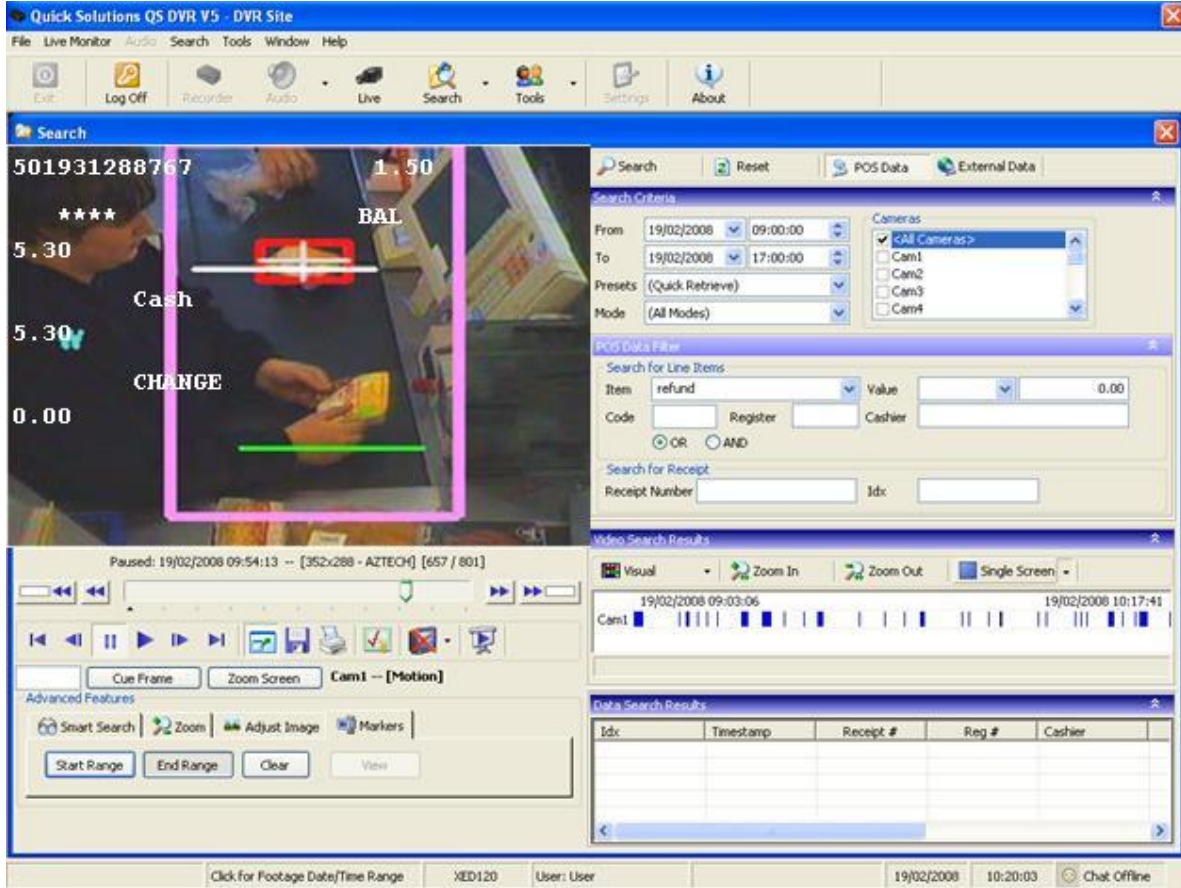
## EPOS Integration with a QS DVR



## EPOS Search

The DVR's EPOS search facility enables you to search camera footage for transaction reference, value, cashier and specific item. Data is displayed adjacent to the video playback window and can be viewed or exported separately for analysis. You can even play back different cameras synchronised with the EPOS data to obtain a different view of the activity.

## EPOS Integration with a QS DVR



## Remote Access

Of course all features and functionality are available from a remote location using our remote client software. From any networked PC you can access data along with live and recorded images **from multiple sites.**

EPOS Integration with a QS DVR

## Appendix: EPOS providers supported by the DVR (February 2009)

Aloha	Pinnacle Pole
Aloha Type B	Pioneer Magnus XV
Aniliza	RSD
Autogas Regal	RSD Type B
Aviv	RSD Type C
Aviv 2	Radiant
Bulloch	Radiant M100
Catapult v4	Radiant Pole Display
CICISS – Decco	Retailpro – Pole
CRS 3000	Retailpro – Printer
Digital Dining	Retalix
Eagle	Retalix Type B
Fiscal	Retalix Type C
Fiscal Type 2	RORC viPOS
Fujitsu	Sam4s
Fujitsu PC	Sam4s 7040
Fujitsu Type 2	Samsung 6500
FuturePOS	Sharp 3300
Gazit	Sharp UP600
Gilbarco Passport	Sobic 824
Gilbarco PC	Spirit 2000
Gilbarco Type 2	SubShop
Gilbarco Type 3	TDL 6.3.4
Global PC	TEC 3600
IBM	TMR
Innovax	Tobacco Barn (DOS)
Liquor	TVC 1066A/2066
Micros 2010	TVC 2100
Micros 3700	Verifone Ruby
Micros 42x-495	Verifone Sapphire
Micros 8700	Verifone Topaz
NCR 7453-1001-M177	Whozz STD
NCR 7456	Whozz TCI
NCR7402-1020	
Owen RMS	
Owen RMS Type 2	
Panasonic 5500	
Panasonic 5500 Custom	
Panasonic 7500	
Panasonic JS135	